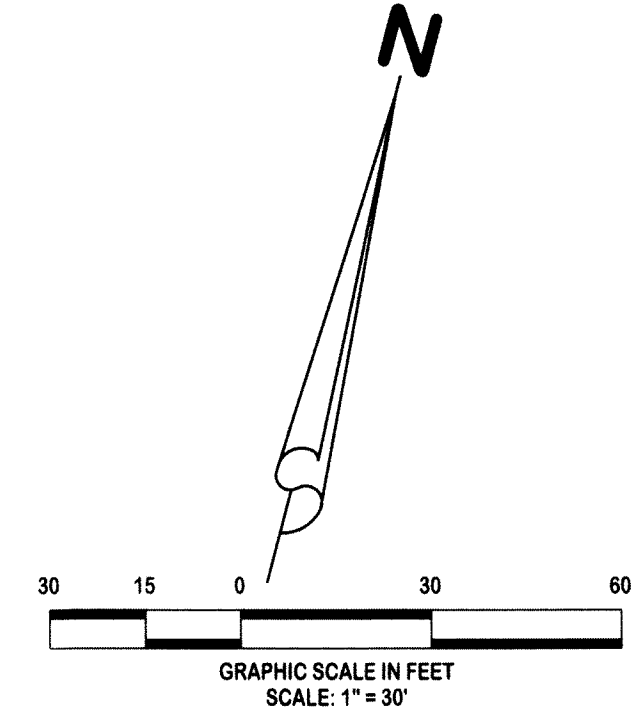


PGA STATION, A P.U.D.

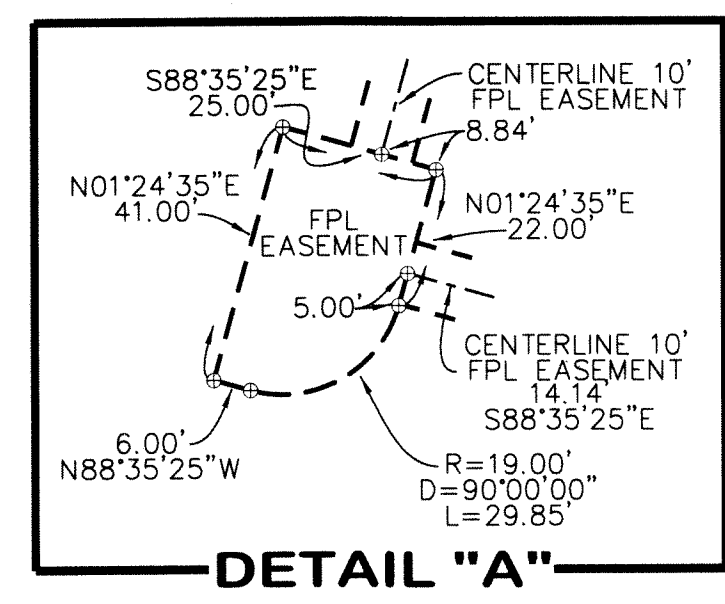
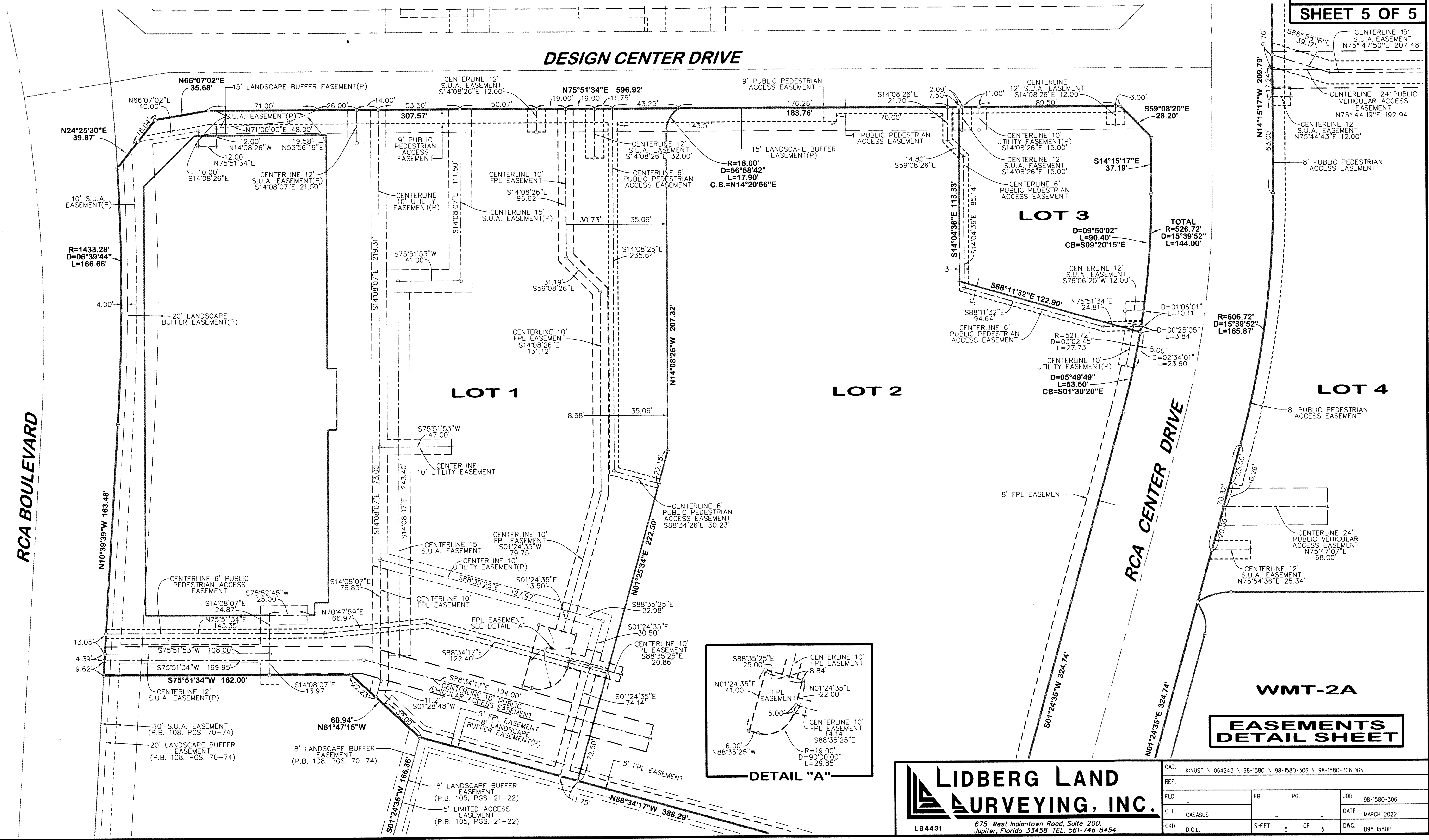
BEING A REPLAT OF PARCEL C AND WATER MANAGEMENT TRACT WMT-2, AS SHOWN ON THE PLAT OF MACARTHUR PARCEL 5B-REPLAT, RECORDED IN PLAT BOOK 108, PAGES 70 THROUGH 74, AND ALSO BEING A REPLAT OF PARCELS B, B-3 AND B-4, AS SHOWN ON THE METES AND BOUNDS SUBDIVISION RECORDED IN OFFICIAL RECORD BOOK 29615, PAGES 252 THROUGH 288, PUBLIC RECORDS OF PALM BEACH COUNTY, FLORIDA AND ALSO LYING IN SECTION 1, TOWNSHIP 42 SOUTH, RANGE 42 EAST AND SECTION 6, TOWNSHIP 42 SOUTH, RANGE 43 EAST CITY OF PALM BEACH GARDENS, PALM BEACH COUNTY, FLORIDA

APRIL 2022



170

SHEET 5 OF 5



**EASEMENTS
DETAIL SHEET**

LIDBERG LAND SURVEYING, INC.
 675 West Indiantown Road, Suite 200, Jupiter, Florida 33458 TEL. 561-746-8454
 LB4431

CAD.	K:\JUST \ 064243 \ 98-1580 \ 98-1580-306 \ 98-1580-306.DGN		
REF.			
FLD.		PG.	JOB 98-1580-306
OFF.	CASASUS		DATE MARCH 2022
CKD.	D.C.L.	SHEET 5 OF 5	DWG. D98-1580P